

MONTHLY MEMBERSHIP PROGRESS REPORT

District 325 L

Results as of: 6/30/2025

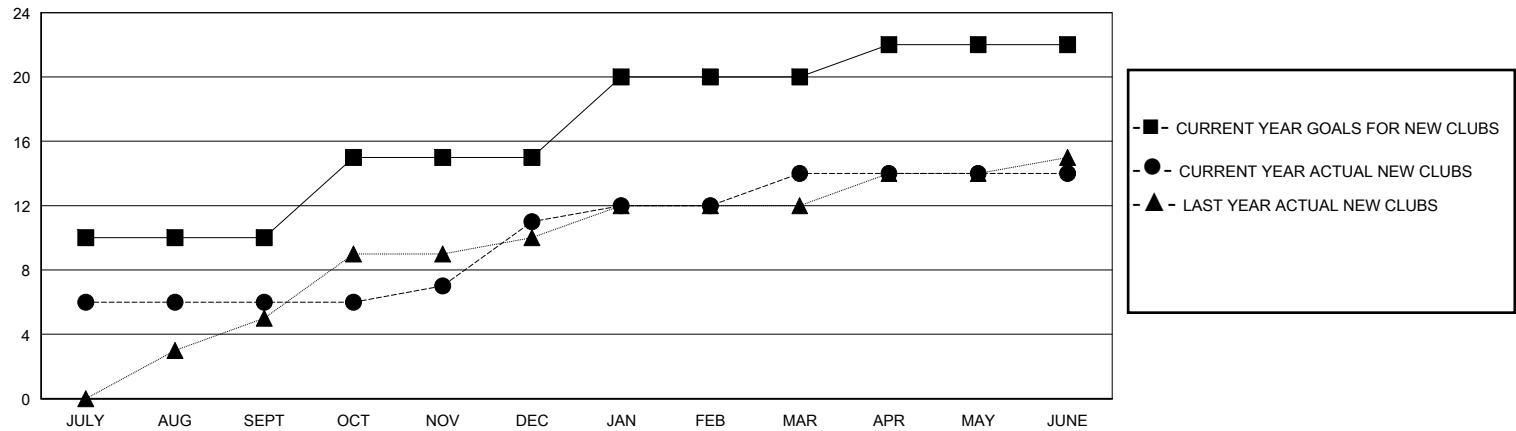
GMT:

LOCATION NEPAL

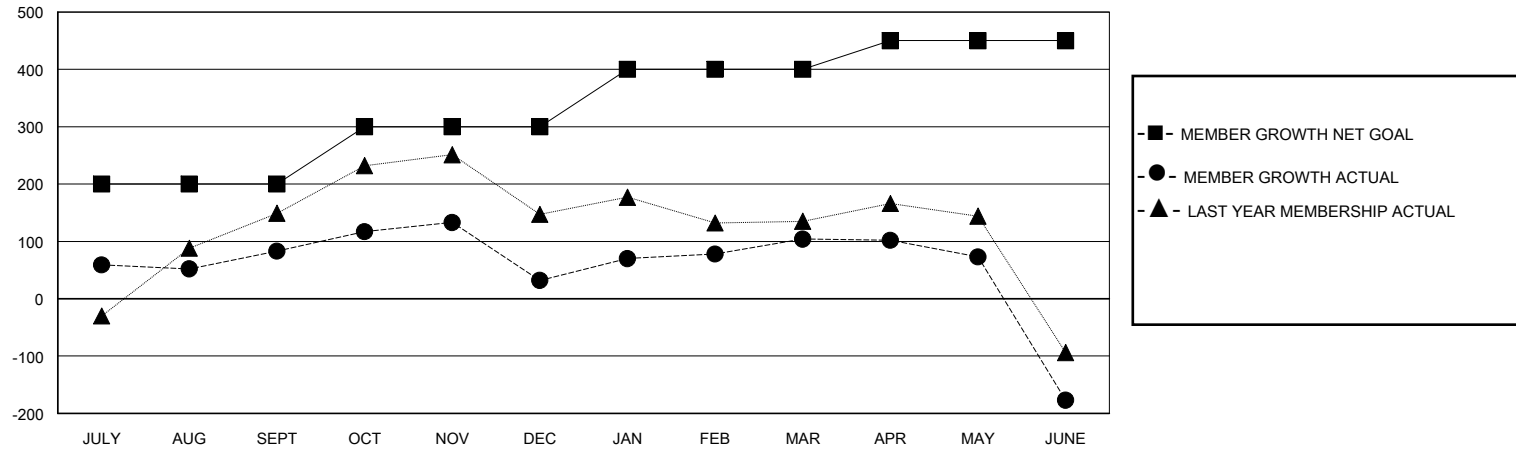
GMT CA

| Clubs                 |               |           |               | Members               |                        |                      |  |
|-----------------------|---------------|-----------|---------------|-----------------------|------------------------|----------------------|--|
| RESULTS FOR 2024-2025 |               |           |               | RESULTS FOR 2024-2025 |                        |                      |  |
| QUARTER               | NEW CLUB GOAL | NEW CLUBS | DROPPED CLUBS | QUARTER               | MEMBER GROWTH NET GOAL | MEMBER GROWTH ACTUAL | DROPPED MEMBERS ACTUAL (including transfers) |
| JULY/AUG/SEPT         | 10            | 6         | 0             | JULY/AUG/SEPT         | 200                    | 213                  | 117  |
| OCT/NOV/DEC           | 5             | 5         | 3             | OCT/NOV/DEC           | 100                    | 186                  | 233  |
| JAN/FEB/MAR           | 5             | 3         | 2             | JAN/FEB/MAR           | 100                    | 108                  | 35   |
| APR/MAY/JUNE          | 2             | 0         | 6             | APR/MAY/JUNE          | 50                     | 92                   | 355  |

GOALS AND ACTUAL NEW CLUBS CUMULATIVE



GOALS AND ACTUAL MEMBERS CUMULATIVE



|                        |  |   |                                     |                |
|------------------------|--|---|-------------------------------------|----------------|
| DROPPED CLUBS: 11      |  | 70 CLUBS OF 117 ADDED 1 OR MORE NEW MEMBERS               | <u>GENDER DISTRIBUTION</u>          |                |
|                        |  |   | MALE                                | 1,559 (70.26%) |
|                        |  |   | FEMALE                              | 643 (28.98%)   |
| <u>DROPPED MEMBERS</u> |  | <a href="#">CLICK HERE FOR CUMULATIVE MEMBERSHIP DATA</a> |                                     |                |
| DECEASED               |  |   | TOTAL FAMILY UNIT MEMBERS 1,437     |                |
| CLUB CANCELLED         |  |   |                                     |                |
| OTHER                  |  |   | FAMILY MEMBERS PAYING HALF DUES 981 |                |
| TOTAL                  |  |   |                                     |                |